



Promostone Industry s.a.r.l is a Moroccan company specialized in stone extraction and stone transformation. Our company owns different marble quarries: Grey Lido, Mediterranean Cream, Yellow California, and Travertin.

Moreover, our company promotes all kind of Moroccan marble for its local and overseas clients for whom it assures the quality and the quantity demanded for either squared blocks, blocks for tiles, slabs, and cut to size.

Since 1998, Promostone Industry s.a.r.l focuses on customer satisfaction through its experienced employees and advanced machineries.

Our export service ensures to our clients an update of the new production on both the owned quarries and the other types of the Moroccan marble promoted.

Promostone Industry s.a.r.l participates in the main fairs and events in the stone industry.



Own Quarry

Yellow California

■ TECHNICAL CHARACTERISTICS

Real density:	2.53
Apparent density:	2.641 g/cm ³
Compactness:	94.93%
Porosity:	5.07%
Apparent porosity:	0.44%
Absorption water at normal pressure:	0.17%
Coefficient saturation:	0.60%
Resistance to compression (dry):	1.260 daN/cm ²
Resistance to compression (saturated):	1.140 daN/cm ²





Own Quarry

Grey Lido Classic

■ TECHNICAL CHARACTERISTICS

Density:	2.725g/cm ³
Apparent density:	2.659 g/cm ³
Compactness:	97.70%
Porosity:	2.55%
Apparent porosity:	0.44%
Absorption water at normal pressure:	0.16%
Coefficient saturation:	0.74%
Resistance to compression (dry):	980 daN/cm ²
Resistance to compression (saturated):	880 daN/cm ²



www.promestoneindustry.com





Grey Lido Jean

■ TECHNICAL CHARACTERISTICS

Density:	2.725g/cm ³
Apparent density:	2.659 g/cm ³
Compactness:	97.70%
Porosity:	2.55%
Apparent porosity:	0.44%
Absorption water at normal pressure:	0.16%
Coefficient saturation:	0.74%
Resistance to compression (dry):	980 daN/cm ²
Resistance to compression (saturated):	880 daN/cm ²



www.promostoneindustry.com





Exclusivity

Mediterranean Cream

■ TECHNICAL CHARACTERISTICS

Density:	2.782g/cm ³
Apparent density:	2.641 g/cm ³
Compactness:	94.93%
Porosity:	5.07%
Apparent porosity:	0.44%
Absorption water at normal pressure:	0.17%
Coefficient saturation:	0.60%
Resistance to compression (dry):	1260 daN/cm ²
Resistance to compression (saturated):	1140 daN/cm ²



www.promestoneindustry.com

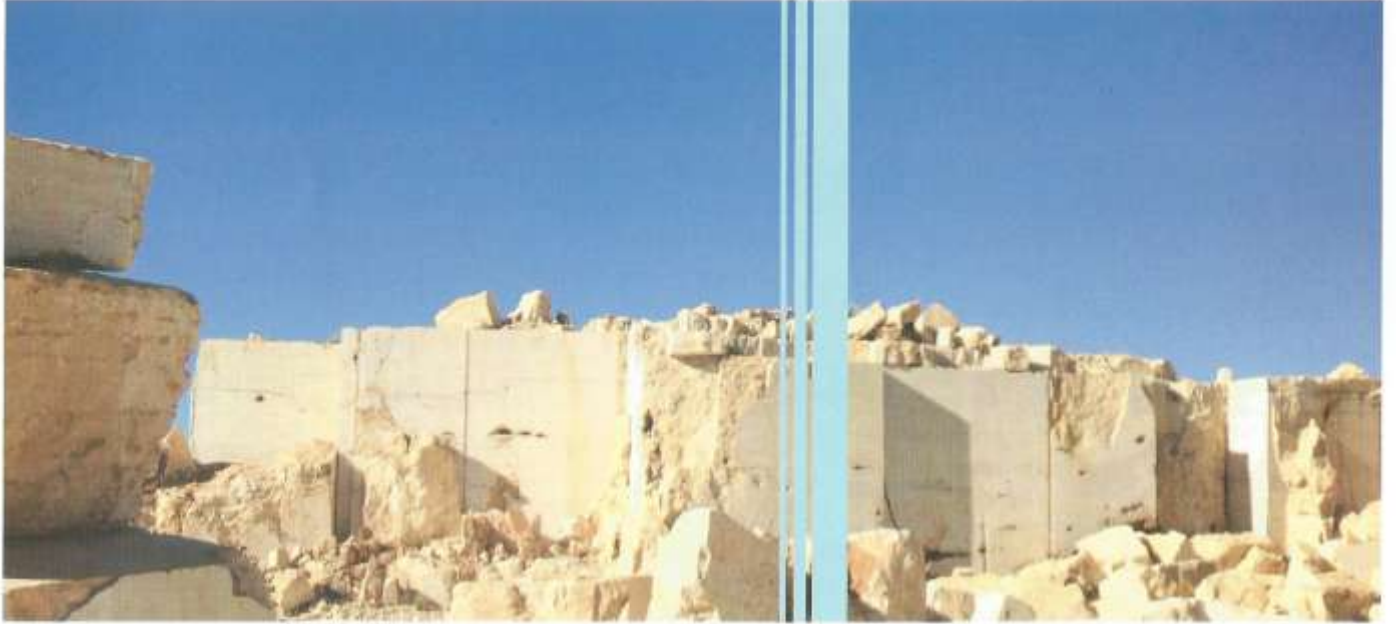




Travertin

■ TECHNICAL CHARACTERISTICS

Density:	2.698 g/cm ³
Compactness:	88.11%
Porosity:	11.89%
Apparent porosity:	3.97%
Water absorption at normal pressure:	1.71%
Coefficient saturation:	0.87%
Compressive strength (dry):	720 daN/cm ²
Compressive strength (saturated):	565 daN/cm ²



www.plemostoneindustry.com





Black Gold

■ TECHNICAL CHARACTERISTICS

Type material :	marble
Quarry location :	Morocco
Availability :	medium
Compressive strenght :	988/Kg cm ²
After freezing :	
Ultimate tensile strenght :	122 /Kg cm ²
Coef. Thermal expansion :	0,0041 mm/mC°
Water absorption :	0,13%
Impact test /min. Fall height :	27,00cm
Frictional wear test :	
Bulk density :	2689 Kg/m ³



www.promestoneindustry.com





Black Khenifra

■ TECHNICAL CHARACTERISTICS

Type material:	Marble
Quarry location:	Morocco
Compressive strength:	1089/kg cm ²
After freezing:	979/kg cm
Ultimate tensile strength:	137/kg cm ²
Coefficient thermal expansion:	0.0028mm/m°C
Water absorption:	0.17%



Beige Sandstone

■ TECHNICAL CHARACTERISTICS

Type material :	sandstone
Compressive strenght :	1900/Kg cm ²
After freezing :	1720/Kg cm ²
Ultimate tensile strenght :	102 /Kg cm ²
Coef. Thermal expansion :	
Water absorption :	0,06%
Impact test /min. Fall height :	7,30cm
Frictional wear test :	
Bulk density :	2652 Kg/m ³



Grey Sandstone

■ ■ TECHNICAL CHARACTERISTICS

Type material :	sandstone
Compressive strenght :	1900/Kg cm ²
After freezing :	1720/Kg cm ²
Ultimate tensile strenght :	102 /Kg cm ²
Coef. Thermal expansion :	
Water absorption :	0,06%
Impact test /min. Fall height :	7,30cm
Frictional wear test :	
Bulk density :	2652 Kg/m ³



Green Sandstone

■ TECHNICAL CHARACTERISTICS	AVERAGE VALUE	NORMATIVE REFERENCE
Density:	2409	NF EN 1936 ASTM C 97/C 97 M
Porosity:	7,5	NF EN 1936 ASTM C 97/C 97 M
Absorption water at normal pressure:	2,7	NF EN 13755 ASTM C 97/C 97 M
Compression:	91	NF EN 1926 ASTM C 170/C 170 M
Resistance to compression (dry):	14	NF EN 12372 ASTM C 99/C 99 M
Abrasion :	26	NE EN 14157